

# CASE STUDIES 2024

# WELCOME TO TOTAL LABORATORIES

Total Laboratories offer the best solutions in laboratory design, fit-out and refurbishment. From groundbreaking start-ups to globally recognised institutions, we design, build and refurbish inspiring laboratory spaces that allow the finest minds to invent, discover and innovate.

For over a decade, our agile team has successfully carried out projects across the UK in a variety of sectors including science, education, information technology, healthcare, retail, food & beverage, aerospace and production.

From conception to completion, we'll be with you every step of the way to provide expert advice and guidance on all aspects of your project. With our technical knowledge and interior design expertise, you can expect a fully managed, turnkey service that will transform your vision into reality.







**03**

WILD BIO



**04**

AMANO ENZ.



**05**

OPTEK



**06**

REVITY



**07**

INTUITIVE



**08**

OXFORD SPACE



**09**

MIDATECH



**10**

HYPHA



**11**

KARUS



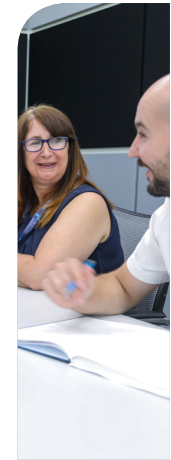
**12**

IMMUNOCORE



**13**

ESG



**14**

ABOUT

# WILD BIOSCIENCE

Location	Milton Park
Contract	Design & Build
Type	Laboratory
Size	31,000 sq ft
Value	£940,000
Programme	16 Weeks
Completion	2023

Completed in November 2023, this light warehouse structure was transformed into a pioneering science and bio-tech hub for Wild Bioscience's ambitious seed trials. Our specialized team ensured a seamless installation of five expansive modular Grow Rooms, three laboratories, as well as internal and external plant rooms. A key requirement on this project was to ensure a contamination-free environment between the laboratories and towards the external atmosphere. Using HEPA filtration, close temperature controls and multiple air changes to avoid cross contamination of pollen, compost or soil. Our program and design met Wild Bioscience's deadlines and technical needs, supporting their mission to combat climate change.





# AMANO ENZYME

Location	Milton Park
Contract	Design & Build
Type	Laboratory & Office
Size	36,000 sq ft
Value	£800,000
Programme	20 Weeks
Completion	2022

The project's key focus was the integration of advanced laboratory technology including a high density of articulated LEV (local extract ventilation) arms provided for health & safety purposes, all of which required meticulous planning and coordination during the design process.

## Testimonial:

“Total Laboratories managed to turn our rough ideas of the new office and laboratory into the design very quickly. Despite our limited knowledge and experience in designing bespoke laboratory, they helped us to walk through the whole process and have been very flexible to incorporate all necessary changes we identified afterwards.”



# OPTEK SYSTEMS

Location	Abingdon Business Park
Contract	Design & Build
Type	Laboratory & Office
Size	40,000 sq ft
Value	£2,700,000
Programme	30 Weeks
Completion	2021

Total Laboratories transformed two adjoining warehouse units in Abingdon into a high-tech headquarters for a precision laser processing company. The project included a 17,000 sq ft mezzanine floor for office and storage space, with the ground floor dedicated to laboratories and manufacturing. The linked warehouses house 23 laboratories and a workshop for laser micromachining, laser processing, and automation development. The West warehouse features seven Class 4 commissioning labs, three test & repair labs, and a 7,000 sqft double void workshop. The East warehouse includes thirteen smaller labs, a Class 1 Display area, a Class 1 Clean Room, and fifteen support rooms. This consolidation brought three operations under one roof.





# REVVITY (Oxford Immunotec)

Location	Milton Park
Contract	Design & Build
Type	Laboratory & Office
Size	30,000 sq ft
Value	£3,500,000
Programme	24 Weeks
Completion	2020

We executed a tailored lab and office project for this world-leading diagnostics company. Our responsibilities included holistic spatial design and proficient management of MEP systems from RIBA Stage 3 of the design process through to successful completion. Prominent challenges encompassed meeting tight deadlines and ensuring compatibility with existing services.

The cantilevered benching was designed to offer flexibility for housing equipment and white goods. The client also wanted the laboratories to be visible from the corridor areas. Transparency was key throughout the office space and laboratories to ensure good communication between the teams.



# INTUITIVE SURGICAL

Location	Oxford Science Park
Contract	Design & Build
Type	Laboratory & Office
Size	11,000 sq ft
Value	£750,000
Programme	14 Weeks
Completion	2019

Intuitive Surgical, a global leader in robotic-assisted surgical equipment, established its UK and Republic of Ireland headquarters and training suite at Oxford Science Park's Schrödinger Building. Total Projects has delivered high-end offices, featuring intricate partitions and joinery, in this renowned BREEAM-certified building. The meticulous attention to detail encompasses partitions, glazing, ceilings, floors, lighting, and furniture, creating a premier business destination. These headquarters offer luxurious training and boardroom facilities, becoming a preferred front-facing destination for clients. Intuitive plans to utilize this facility for education, training programs, and showcasing its products, further enhancing physicians' capabilities and providing less invasive treatment options.





# OXFORD SPACE SYSTEMS

Location	Harwell Campus
Contract	Design & Build
Type	Laboratory
Size	14,000 sq ft
Value	£1,700,000
Programme	23 Weeks
Completion	2019

In 2019, Total Laboratories transformed a warehouse into a two-story laboratory and office complex. The centrepiece is a 7m-high prefabricated “Class 7 Clean Room” with a 20m x 25m footprint, featuring an overhead gantry crane. Class 7 Clean Rooms must maintain 60-150 air changes per hour and air cleanliness levels of up to 10,000 particles ( $\geq 0.5\mu\text{m}$ ) per cubic foot. Due to its size and occupancy (13,000 cubic feet and 10 personnel), the clean room requires complex HEPA filtration, air changes and fume extraction. It needs sealed aluminium panels for containment and an airlock changing room.

Proposed additions include a second staircase, lift, kitchenette, breakout area, boardroom, meeting rooms, and new WCs.



# MIDATECH

Location	Milton Park
Contract	Design & Build
Type	Laboratory
Size	5,000 sq ft
Value	£300,000
Programme	10 Weeks
Completion	2019

Our team successfully transformed a 1980s building into a high-tech laboratory spanning two floors. The project involved converting an existing office space into CL2 laboratories (ACDP containment level 2) to develop therapeutic products for major diseases.

Our work encompassed installing new flooring, ceilings, and incorporating essential components, such as fume cupboards, Class II biological safety cabinets and demineralized water systems. This meticulous renovation has resulted in a modern and functional cancer research facility meeting all required specifications, including hygienic wall & floor finishes, a hard-wearing benching system and glazed partitions across the corridors.





# HYPHA DISCOVERY

Location	Milton Park
Contract	Design & Build
Type	Laboratory
Size	10,000 sq ft
Value	£520,000
Programme	16 Weeks
Completion	2020

Total Laboratories successfully executed the conversion of a light industrial unit into a cutting-edge suite of hightech CL2 laboratories.

This transformation included the integration of eight large fume cupboards requiring the installation of associated air handling plant and technical equipment.

The result is a facility designed to meet ACDP CL2 laboratory standards, showcasing our expertise in creating sophisticated and functional spaces for advanced research and development.



# KARUS THERAPEUTICS

Location	Harwell Campus
Contract	Design & Build
Type	Laboratory
Size	10,000 sq ft
Value	£1,500,000
Programme	18 Weeks
Completion	2018

Total Laboratories were instructed to carry out a full Design & Build process to provide a 50/50 office and laboratory Headquarters for Karus Therapeutics.

This included supply and installation of a steel mezzanine floor to accommodate office spaces served by two staircases and an accessible lift.

The ground floor incorporates four CL2 laboratories with associated write-up space and plant area, whilst the first floor provides offices, breakout spaces and the main plantroom.



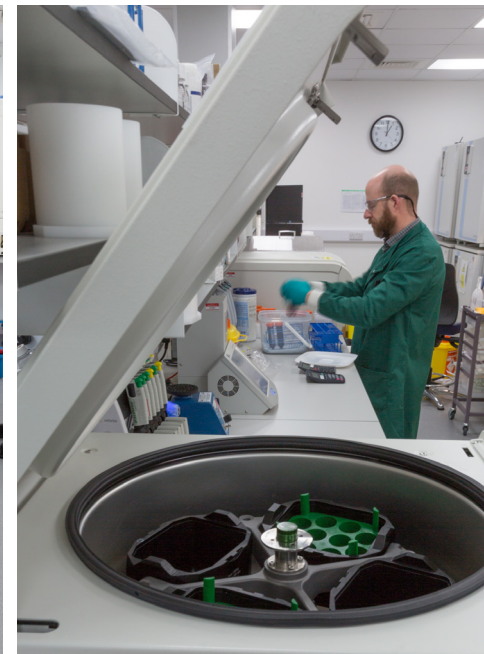


# IMMUNOCORE

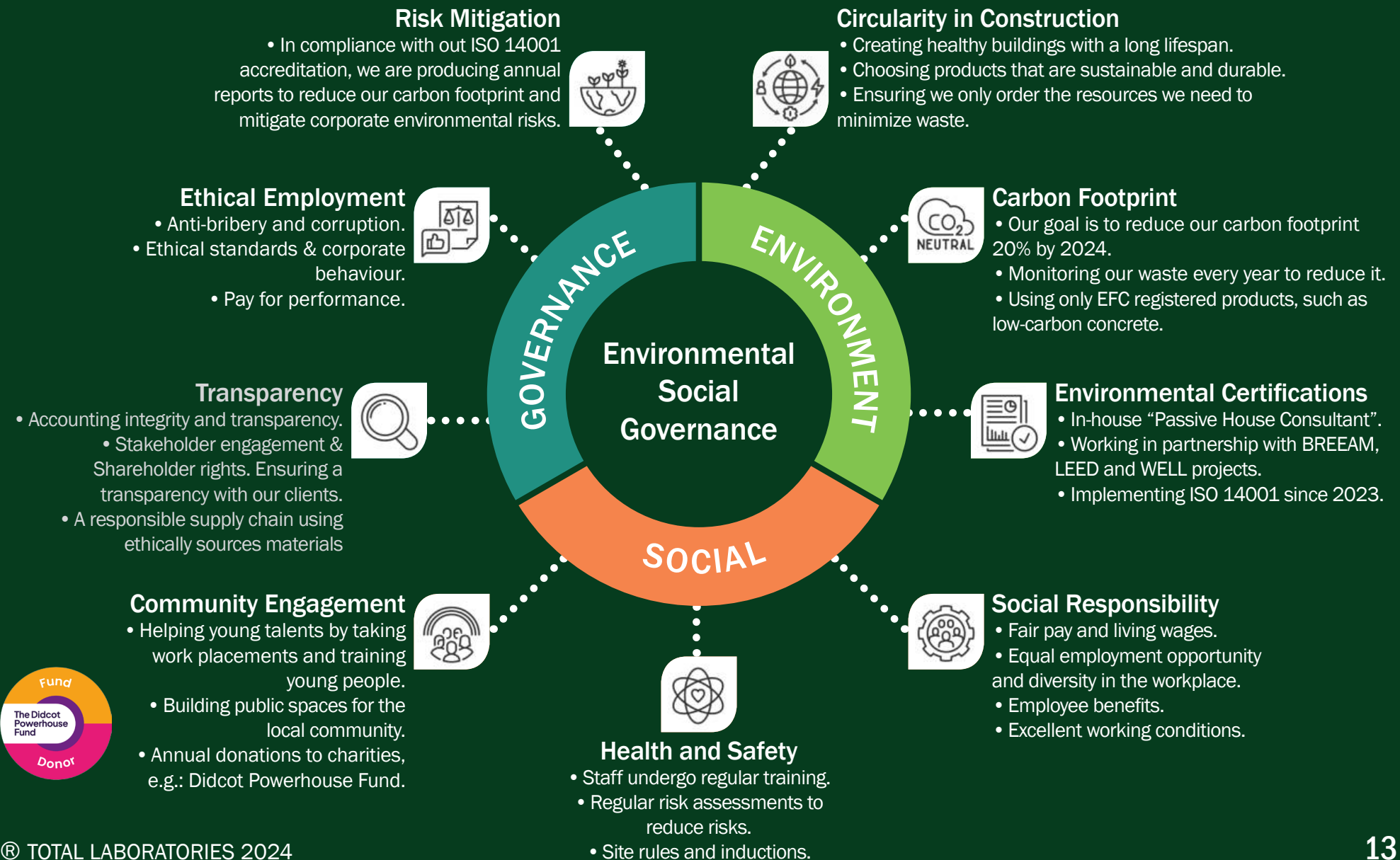
Location	Milton Park
Contract	Design & Build
Type	Laboratory
Size	5,000 sq ft
Value	£600,000
Programme	16 Weeks
Completion	2018

Total Laboratories was tasked with executing the Design & Build fit-out for Immunocore, aimed at delivering 5,000 sq ft of supplementary CL2 laboratories (ACDP containment level 2) within the current premises of Building 90 at Milton Park.

This project included the construction of partitions, suspended ceilings and lab benching, as well as the installation of technical equipment such as fume cupboards, cold rooms, and specialist gases. The client requirements called for a significant amount of equipment within a compact space, necessitating meticulous coordination of air extract, ventilation, and electrical systems.



# OUR ESG OBJECTIVES





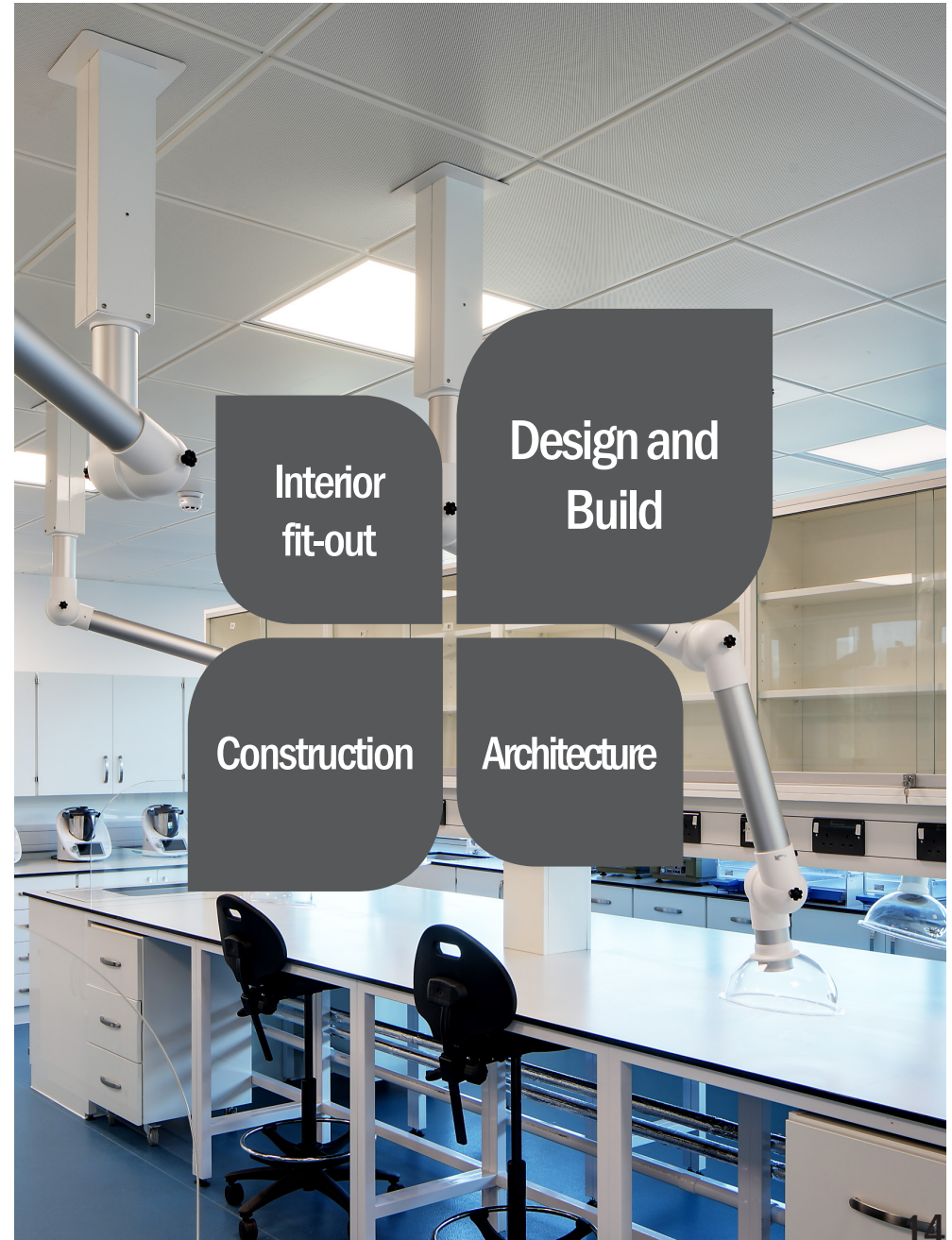
# OUR SERVICES

Total Laboratories has been delivering construction and Cat A & B laboratory and commercial fit-out projects across the UK since 2011. Whether your organisation is relocating or refurbishing, a specialist fit-out will transform the ambience of your workplace.

We are passionate about creating healthy buildings and vibrant working environment that boosts productivity, motivation and staff well-being.

We are proud to have completed over 200 projects that have been well received by the community and our clients since 2011. At Total Group we encompass a wide range of projects, including:

- **Laboratories**
- **Offices and co-working spaces**
- **Educational spaces**
- **Leisure spaces: amenities, restaurants, shops, landscaping and communal facilities.**





# MEET OUR TEAM

At Total Laboratories, we comprise a team of over fifty professionals who have the expertise and experience required to deliver complex and high-quality laboratory projects.

Our in-house Design team produces tailored design and architecture solutions, while our project managers, cost estimators, engineers, and on-site professionals execute projects on time and within budget.

We are prepared to listen and offer you the best advice at every step of the way.





# ACCREDITATIONS



# A FEW OF OUR CLIENTS



# THANK YOU



## SHARE THIS PORTFOLIO

[www.totallaboratoriesltd.co.uk/  
case-studies](http://www.totallaboratoriesltd.co.uk/case-studies)

## OUR FAMILY

[www.totallaboratoriesltd.co.uk](http://www.totallaboratoriesltd.co.uk)

[www.totalprojectsltd.co.uk](http://www.totalprojectsltd.co.uk)

[www.total-electricalltd.co.uk](http://www.total-electricalltd.co.uk)

## GET IN TOUCH

[info@totallaboratoriesltd.co.uk](mailto:info@totallaboratoriesltd.co.uk)

01235 841535

140 Eastern Avenue,  
Milton Park, OX14 4SB